

State of Rhode Island and Providence Plantations

Budget



Fiscal Year 2013

Volume III – Education

Lincoln D. Chafee, Governor

Agency

Rhode Island Council On The Arts

Agency Mission

To ensure that the arts in Rhode Island communities continue to grow and play an increasing role in the welfare and educational experience of Rhode Islanders.

Agency Description

The Rhode Island State Council on the Arts was established in 1967. It provides grants, technical assistance and support to arts organizations, schools, community centers, social service organizations, and local governments to bring the arts into the lives of Rhode Islanders. For effective delivery of services to the field, the agency's activities are guided by three core functions: grant-making, partnerships, and outreach and facilitation.

Funding within the agency's various grant categories allows the council to address its primary function by awarding grants to non-profit organizations and providing arts programming to support non-profit organizations, schools and individual artists.

The second core function refers to developing strategic partnerships with major institutions and entities from the public and private sectors in order to broaden support for the arts. A few current partners include: the National Endowment for the Arts, the New England Foundation for the Arts, the Rhode Island Foundation, the Alliance for Arts Education, the Arts & Business Council of Rhode Island, and the State Department of Elementary and Secondary Education.

The third core function of the council includes providing technical assistance and information services. These services include management assistance to individual artists and arts organizations, workshops and general dissemination of information through a wide variety of media including on-line information services.

Motion pictures and television play a significant role in the cultural life of the state. Film and TV has grown during the past several decades into an important art form, and film and TV on the national and international level is a formidable economic engine. The combination of the Rhode Island Film & Television Office with the Rhode Island State Council on the Arts reinforces state support for these art forms, enhances the attractiveness of the state to national and international productions, and facilitates economic progress for the state.

The Art for Public Facilities Program allows the council to acquire works of art for state buildings regularly accessible to the general public in order to expand the public experience of art. The council coordinates the process for commissioning art in public facilities in compliance with the Allocation for Art for Public Facilities Act.

Statutory History

R.I.G.L. 42-75 defines the role of the council.

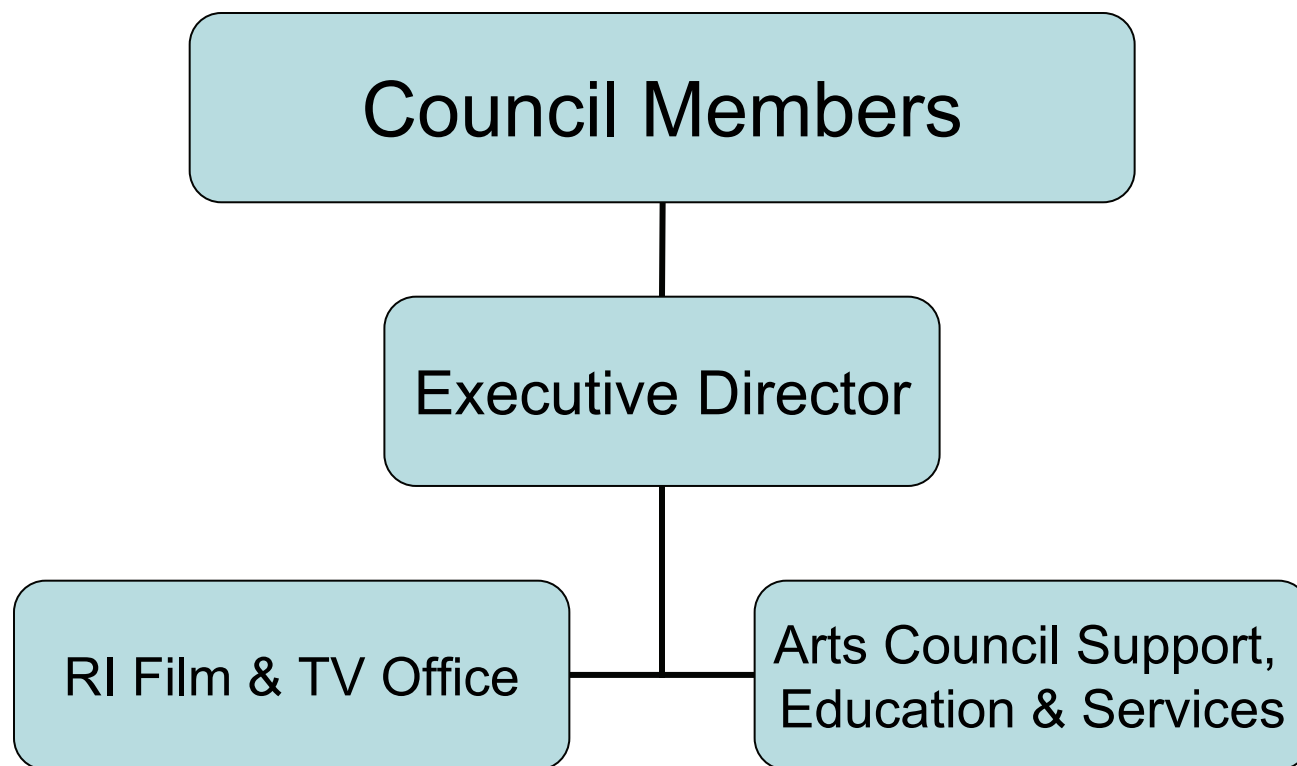
Budget

Rhode Island Council On The Arts

	FY 2010 Audited	FY 2011 Audited	FY 2012 Enacted	FY 2012 Revised	FY 2013 Recommend
Expenditures By Program					
Central Management	2,032,105	2,451,655	2,124,699	2,909,221	2,567,352
Grants Programs	982,353	1,002,473	962,227	962,227	861,671
Total Expenditures	\$3,014,458	\$3,454,128	\$3,086,926	\$3,871,448	\$3,429,023
Expenditures By Object					
Personnel	726,573	809,480	868,688	863,229	882,996
Operating Supplies and Expenses	70,066	67,827	106,011	112,992	125,856
Assistance and Grants	2,045,037	1,761,895	1,712,227	1,712,227	1,611,671
Subtotal: Operating Expenditures	2,841,676	2,639,202	2,686,926	2,688,448	2,620,523
Capital Purchases and Equipment	172,782	634,926	400,000	1,183,000	808,500
Operating Transfers	-	180,000	-	-	-
Total Expenditures	\$3,014,458	\$3,454,128	\$3,086,926	\$3,871,448	\$3,429,023
Expenditures By Funds					
General Revenue	1,615,295	1,681,095	1,678,862	1,673,875	1,586,729
Federal Funds	1,117,813	954,515	973,064	979,573	998,794
Restricted Receipts	100,000	-	-	-	-
Operating Transfers from Other Funds	181,350	818,518	435,000	1,218,000	843,500
Total Expenditures	\$3,014,458	\$3,454,128	\$3,086,926	\$3,871,448	\$3,429,023
FTE Authorization	8.6	8.6	8.6	8.6	8.6
Agency Measures					
Minorities as a Percentage of the Workforce	11.6%	11.6%	11.6%	11.6%	11.6%
Females as a Percentage of the Workforce	69.8%	69.8%	69.8%	69.8%	69.8%
Persons with Disabilities as a Percentage of the Workforce	-	-	-	-	-
Percentage of Rhode Island Cities and Towns from whom Applications were Received	100.0%	97.0%	97.0%	97.0%	100.0%
Objective	100.0%	100.0%		100.0%	100.0%
Percentage of Rhode Island Cities and Towns from whom Applications were Awarded	85.0%	90.0%	95.0%	95.0%	100.0%
Objective	100.0%	100.0%		100.0%	100.0%

The Agency

Rhode Island Council on the Arts



Personnel

Rhode Island Council On The Arts Central Management

	Grade	FY 2012		FY 2013	
		FTE	Cost	FTE	Cost
Unclassified					
Executive Director, Film Office	0839A	1.0	102,020	1.0	102,020
Executive Director	0833A	1.0	88,214	1.0	88,214
Sr. Systems Design Programmer	0328A	0.6	37,620	0.6	39,345
Arts in Education Director	0383F	1.0	60,921	1.0	60,921
Sr. Administrative Aide	0321A	1.0	52,852	1.0	52,852
Senior Research Technician	0321A	3.0	139,406	3.0	144,731
Administrative Assistant	0316A	1.0	42,623	1.0	42,623
Subtotal		8.6	\$523,656	8.6	\$530,706
Total Salaries		8.6	\$523,656	8.6	\$530,706
Benefits					
Defined Contribution Plan		-	-	-	5,307
FICA		-	40,058	-	40,599
Medical		-	93,616	-	104,541
Payroll Accrual		-	-	-	3,136
Retiree Health		-	35,924	-	36,407
Retirement		-	120,337	-	112,398
Subtotal		-	\$289,935	-	\$302,388
Total Salaries and Benefits		8.6	\$813,591	8.6	\$833,094
Cost Per FTE Position			\$94,604		\$96,871
Statewide Benefit Assessment		-	19,638	-	19,902
Subtotal		-	\$19,638	-	\$19,902
Payroll Costs		8.6	\$833,229	8.6	\$852,996
Purchased Services					
Other Contract Services		-	15,000	-	15,000
Training and Educational Services		-	15,000	-	15,000
Subtotal		-	\$30,000	-	\$30,000
Total Personnel		8.6	\$863,229	8.6	\$882,996
Distribution By Source Of Funds					
General Revenue		6.6	664,343	6.6	678,323
Federal Funds		2.0	183,886	2.0	189,673
Other Funds		-	15,000	-	15,000
Total All Funds		8.6	\$863,229	8.6	\$882,996

Central Management

Percentage of Rhode Island Cities and Towns from whom Applications were Received

RISCA has been very successful in attracting the participation of individual artists, schools and arts organizations in many of Rhode Island's cities and towns. We do this by spending a great deal of time in many of our state's communities. We conduct grant workshops throughout the state at least twice each year. We meet on a regular basis with individuals and organizations interested in applying to RISCA for support, and many of these meetings take place in the community. In addition, RISCA actively communicates with mayors, town managers and Members of the General Assembly to make them aware of opportunities for their constituents.

This data has been compiled from our Grants Management System. It represents actual applications received and grants awarded in FY2010 and FY2011. The FY2012 data represents applications received and grants awarded through January 1, 2012. The FY2013 target meets our goal of 100% participation.